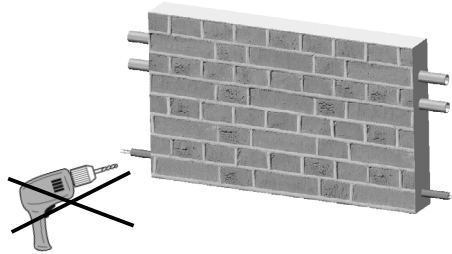
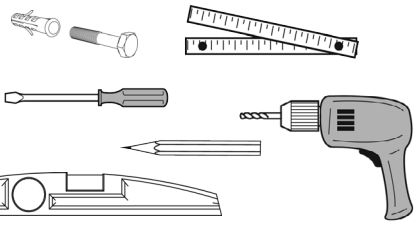
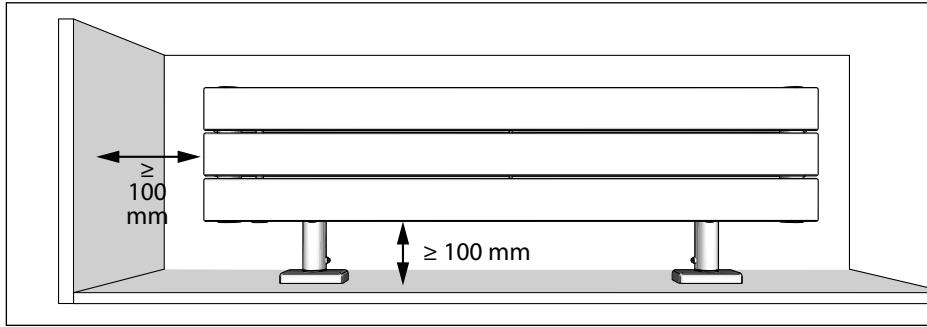


40024612

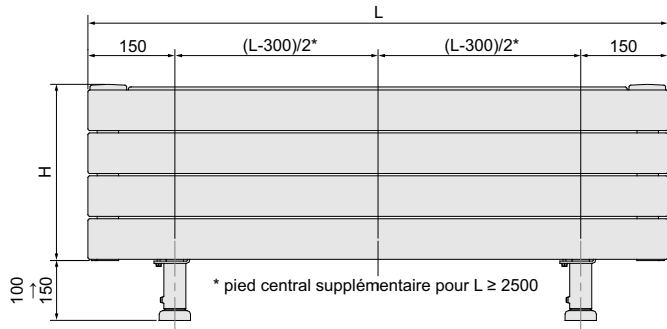


Instructions de montage originales 24/08/21 PVA

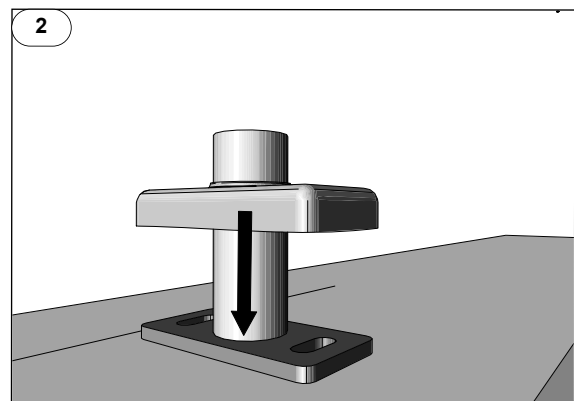
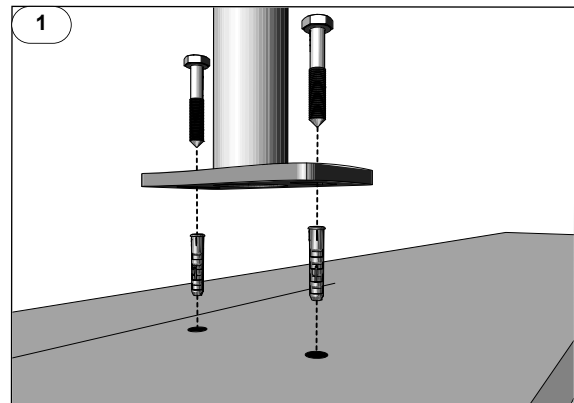
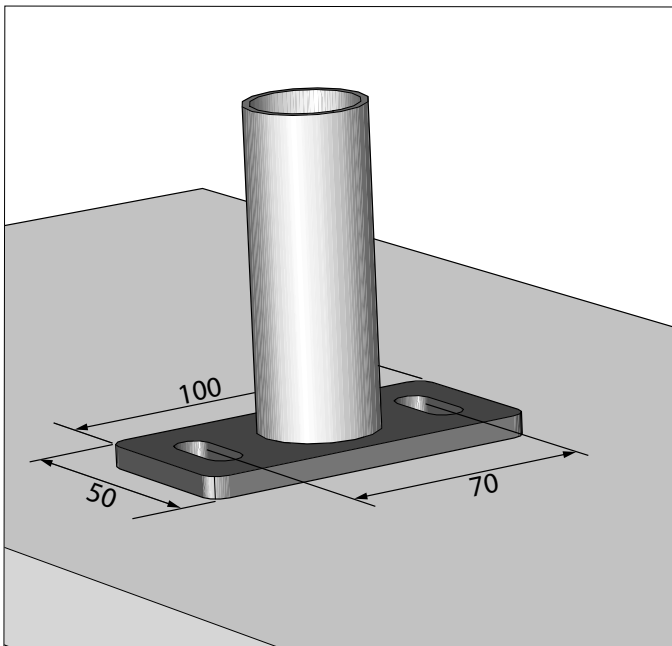
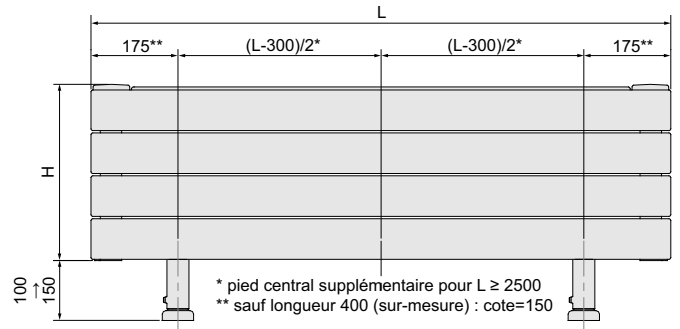
**Purgeur à jet orientable:** Serrez modérément le purgeur sur le radiateur pour faire étanchéité à l'aide du joint torique (15 Nm max).



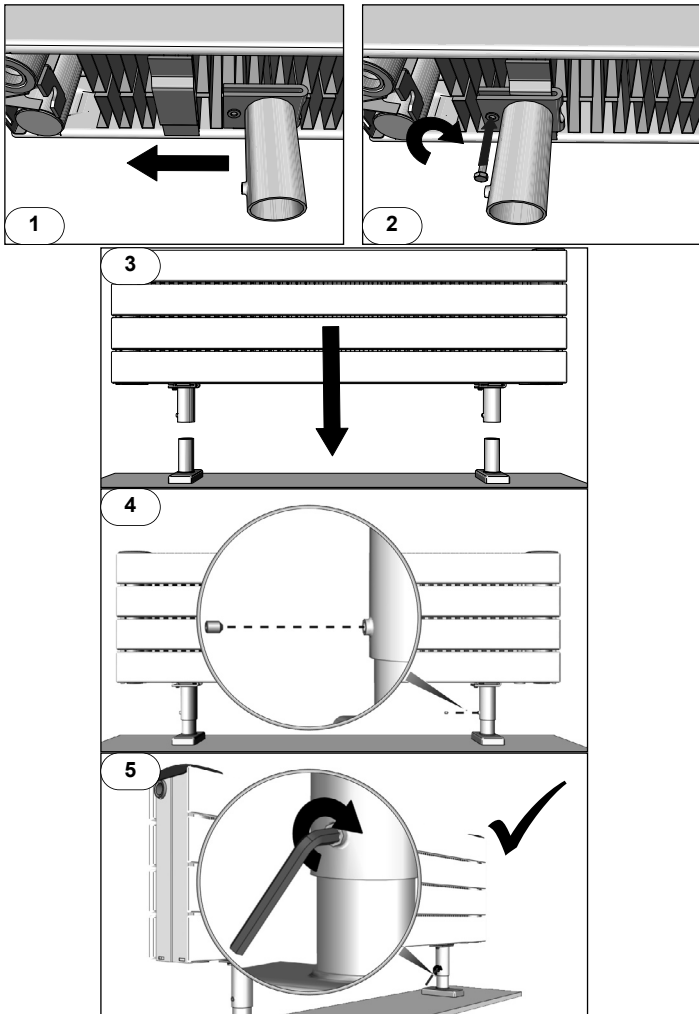
**CLXD**



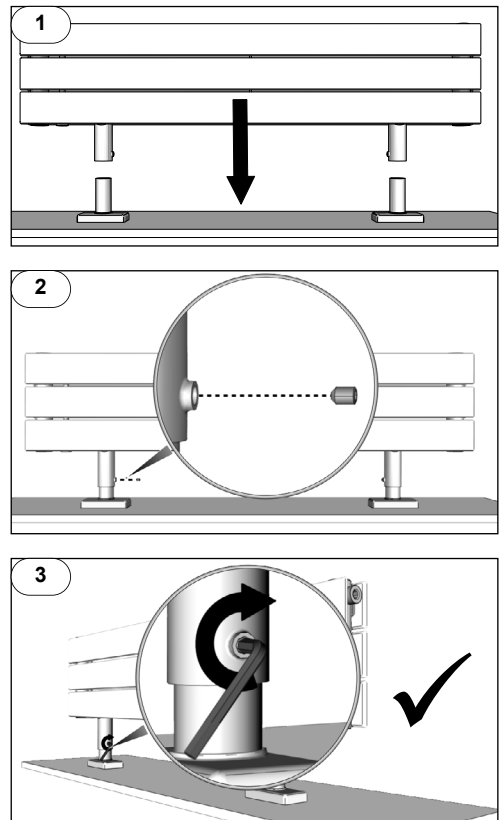
**CVXD**



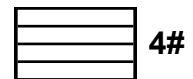
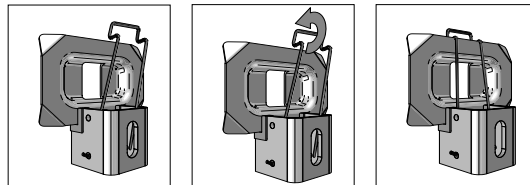
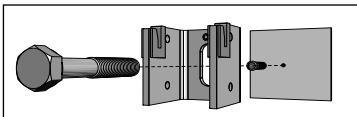
## CLXD



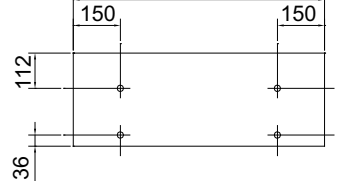
## CVXD



### CVXD : option fixations murales C2 (sans pieds)

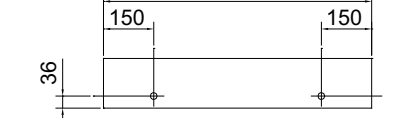


600 → 2400

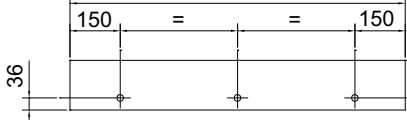


2#

600 → 1900

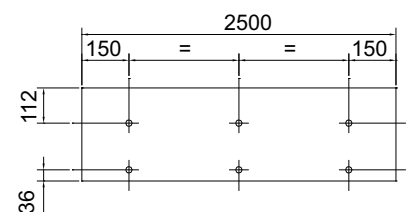
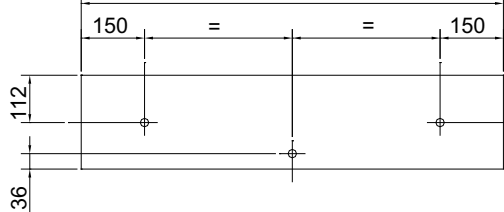


2000 → 2500



3#

600 → 2500



### CLXD : option fixations murales IBR (sans pieds)

